

# TSC

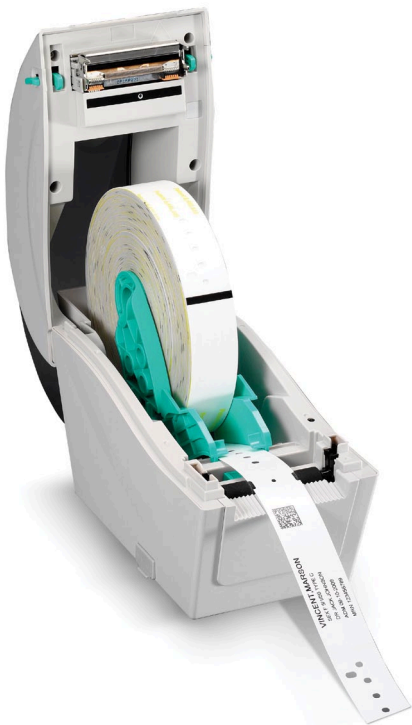
The Smarter Choice.

CELEBRATING 20 YEARS



## TDP-324W SERIES Desktop Direct Thermal Wristband Printers

# EVERY FEATURE YOU NEED FOR MEDICAL AND ENTERTAINMENT WRISTBAND PRINTING



### KEY FEATURES

- High resolution 300 dpi printer, also available in 203 dpi resolutions
- Can use any roll of wristbands from any supplier
- Save up to 50% on cost of wristbands
- Designed to hold 6.5" OD wristbands
- Front LCD display
- High quality double-walled clamshell design
- Easy media loading
- Up to 127 mm (5") per second print speed
- microSD Flash memory expansion up to 4 GB
- Ethernet and USB 2.0 connectivity standard
- Optional peel-off module, cutter module and down-time keyboard interface
- Can be programmed to work without a computer attached
- Cerner Certified and works in any hospital system

### APPLICATIONS

- **Healthcare**
  - Patient ID Tracking
  - Hospital Admissions
  - Hospital Nursery
- **Entertainment & Hospitality**
  - Amusement Parks
  - Water Parks
  - Event Admissions
  - Night Club Age Verification
- **Other Markets**
  - Law Enforcement
  - Crowd Control
  - Animal ID
  - Restricted Area Access



## TDP-324W SERIES Desktop Direct Thermal Wristband Printers

PRINTER MODEL	TDP-225W	TDP-324W
Resolution	8 dots/mm (203 DPI)	12 dots/mm (300 DPI)
Printing method	Direct Thermal	
Max. print speed	127 mm (5 )/second	102 mm (4 )/second
Max. print width	52 mm (2.05 )	48 mm (1.89 )
Max. print length	2,286 mm (90 )	1,016 mm (40 )
Enclosure	Clamshell design with wall mount hole at the bottom cover	
Physical dimension	109 mm (W) x 210 mm (H) x 260 mm (D) 4.29 (W) x 8.27 (H) x 10.24 (D)	
Weight	1.2 kg (2.65 lbs)	
Label roll capacity	165 mm (6.5 ) OD	
Processor	32-bit RISC CPU	
Memory	4 B Flash memory 8 B SDRAM microSD card reader for Flash memory expansion, up to 4 GB	
Interface	USB 2.0 Internal Ethernet, 10/100 bps USB host, for scanner or PC keyboard (factory option)	
Power	External universal switching power supply Input AC 100-240V, 1A, 47-63Hz Output DC 24V, 2.08A, 50W	
LCD	Graphic type, 128 x 64 pixels, with back light	
Operation switch, button LED	1 power switch, 1 feed button 1 LED (3 colors green, amber, red)	
Sensors	Transmissive gap sensor Black mark reflective sensor (position adjustable) Head open sensor	
Real time clock	Standard	
Internal fonts	8 alpha-numeric bitmap fonts onotype Image® true type font engine with one CG Triumvirate Bold Condensed scalable font	
Bar code	1D bar code Code 39, Code 93, Code 128UCC, Code 128 subsets A, B, C, Codabar, Interleave 2 of 5, EAN-8, EAN-13, EAN-128, UPC-A, UPC-E, EAN and UPC 2 (5) digits add-on, SI, PLESSE, POSTNET, China POST, GS1 DataBar, Code 11 2D bar code PDF-417, maxicode, Data matrix, QR code, Atec	
Font and barcode rotation	0, 90, 180, 270 degree	
Printer language	TSPL-EZ™	
Media type	Continuous, die-cut, black mark, fan-fold, notched, wristband (outside wound)	
Media width	15 ~ 52 mm (0.59 ~ 2.05 )	
Media thickness	0.06 ~ 0.19 mm (2.36 ~ 7.48 mil)	
Media core diameter	25.4 mm (1 )	
Label length	10 ~ 2,286 mm (0.39 ~ 90 )	10 ~ 1,016 mm (0.39 ~ 40 )
Environment condition	Operation 5 ~ 40 C, 25 ~ 85% non-condensing Storage -40 ~ 60 C, 10~ 90% non-condensing	
Safety regulation	FCC Class B, CE Class B, C-Tick Class B, UL, CUL, TÜV/Safety, CCC	
Environmental concern	Comply with RoHS, WEEE	
Accessories	Windows labeling software CD disk quick start guide USB cable Power cord External universal switching power supply	
Limited warranty	Printer 2 years Print head 25 km (1 million inches) or 12 months which comes first Platen 50 km (2 million inches) or 12 months which comes first	
Factory options	USB host, for scanner or PC keyboard	
Dealer options	Peel-off module Guillotine cutter (full cut and partial cut)	
User options	N/A	



**TSC**  
The Smarter Choice.  
CELEBRATING 20 YEARS